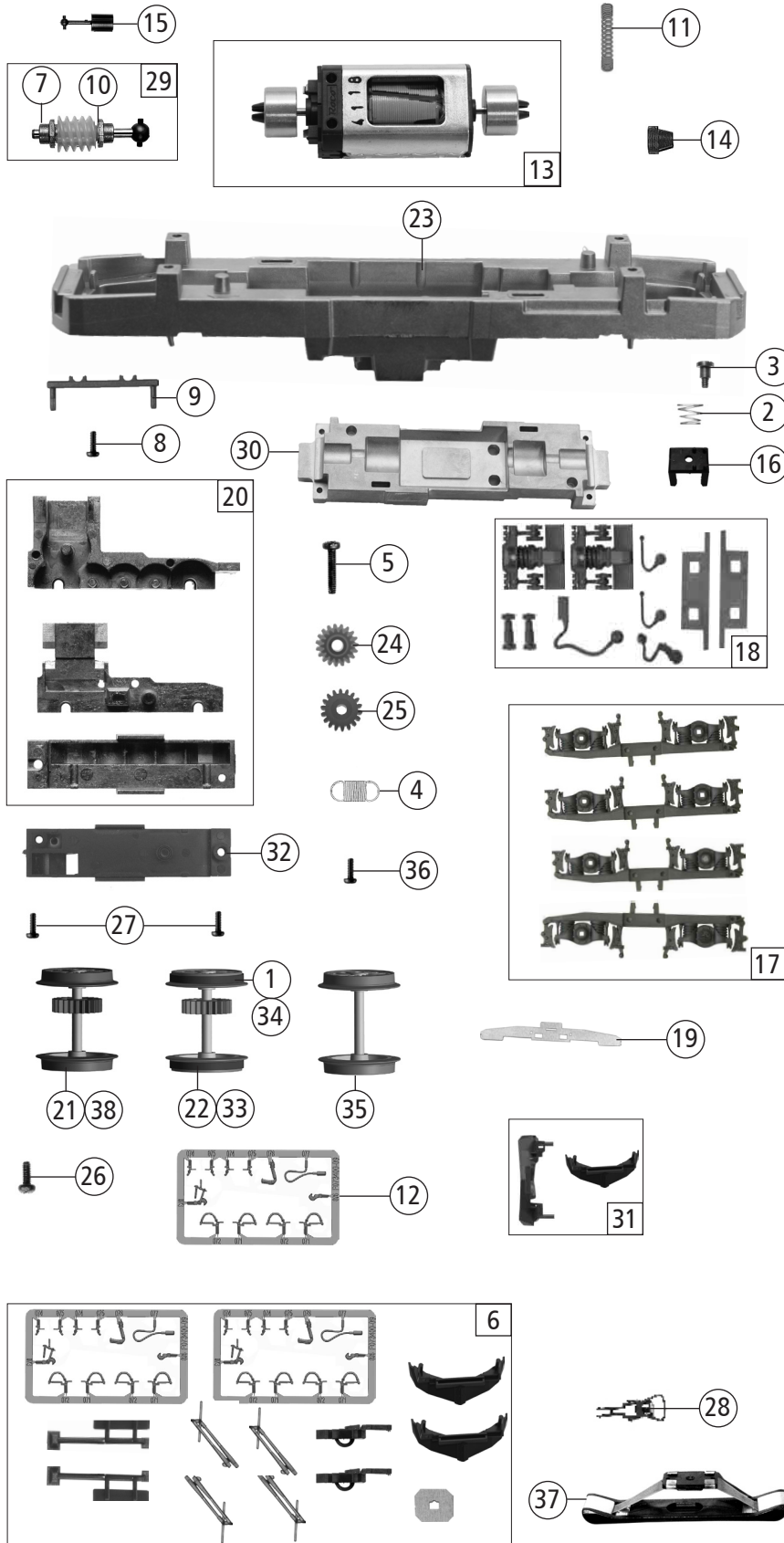


| Pos. Nr.<br>Pos.no. | Beschreibung<br>Description   | Art.-Nr.<br>Art.no. | Preisgruppe<br>Price bracket |
|---------------------|---|---------------------|------------------------------|
| 1                   | Gehäuse kpl. Re4/4 185<br>Body ass. no.                             | 142405              | 37                           |
| 2                   | Lokpfeife<br>Loco whistle   | 88002               | 6                            |
| 3                   | UIC-Dose<br>UIC socket  | 124154              | 3                            |
| 4                   | Puffer rund gewölbt<br>Buffer round curved                          | 141984              | 3                            |
| 5                   | Puffer rund flach<br>Buffer round flat                              | 141985              | 3                            |
| 6                   | Führerstand<br>Driver's cab   | 142406              | 5                            |
| 7                   | Stirn + Seitenfenster<br>Front + side window                        | 142407              | 10                           |
| 8                   | Inneneinrichtung<br>Interior fittings                               | 142408              | 14                           |
| 9                   | Widerstandsgitter<br>Resistor                                       | 142409              | 7                            |
| 10                  | Bremswiderstand<br>Breaking resistor                                | 142410              | 5                            |
| 11                  | TS - Lüftergitter<br>Part set ventilator grills                     | 142411              | 11                           |
| 12                  | TS - Dachlaufstege<br>Part set roof runway                          | 142412              | 7                            |
| 13                  | TS - Spiegel, Griff<br>Part set of rear-view mirrors, hand-rail     | 142413              | 5                            |
| 14                  | Stromabnehmer<br>Pantograph   | 85575               | 19                           |
| 15                  | TS - Lichtnägel<br>Part set - light pin                             | 142419              | 6                            |
| 16                  | Steckdose<br>Socket   | 142399              | 3                            |
| 17                  | Platine kpl.<br>PCB complete  | 142400              | 20                           |
| 18                  | Brückenstecker 16 Plux Zimo<br>Jumper                               | 129630              | 10                           |
| 19                  | TS - Isolatoren<br>Part set - isolators                             | 142414              | 6                            |
| 20                  | Hauptschalterplatte<br>Mains switch plate                           | 136626              | 5                            |
| 21                  | Hauptschalter<br>Mains switch                                       | 100775              | 4                            |
| 22                  | TS - Luftkessel, ...<br>Part set of air tank                        | 142396              | 11                           |
| 23                  | Lichtleiter L=27,3 mm<br>Light conductor L=27,3 mm                  | 142397              | 3                            |
| 24                  | Isolator<br>Isolator  | 88039               | 3                            |
| 25                  | TS - Deichsel<br>Drawbar part set                                   | 142393              | 6                            |
| 26                  | Lichtabdeckung + Isolierhülse<br>Light cover +                      | 142394              | 4                            |
| 27                  | Dachleitung Schere<br>Roof wiring                                   | 142415              | 5                            |
| 28                  | TS - Antenne<br>Part set - antenna                                  | 142416              | 5                            |
| 29                  | Lichtnagel lang<br>Light pin long                                   | 142417              | 5                            |
| 30                  | Lampenring klein<br>Lamp ring small                                 | 142420              | 4                            |
| 31                  | TS - Griffe<br>Part set - handles                                   | 142421              | 11                           |
| 32                  | Puffergriff<br>Buffer grip  | 142422              | 4                            |
| 33                  | GF-Schraube M1,6x4 mm<br>Self-tapping screw M1,6x4 mm               | 114850              | 3                            |
| 34                  | GF-Schraube M1,6x6 mm schwarz<br>Self-tapping screw M1,6x6 mm black | 114836              | 3                            |
| 35                  | GF-Schraube M1,6x4 mm<br>Self-tapping screw M1,6x4 mm               | 114850              | 3                            |
| <b>Sound</b>        |   |                     |                              |
| 35                  | Platine kpl. f. So.<br>PCB complete                                 | 142424              | 22                           |
| 36                  | Sounddecoder<br>Sound-decoder                                       | 142425              | 40                           |
| 37                  | Lautsprecher<br>Loudspeaker   | 129524              | 14                           |
| 38                  | Gummidichtung lang<br>Rubber seal                                   | 142426              | 3                            |



| Pos. Nr.<br>Pos.no.      | Beschreibung<br>Description   | Art.-Nr.<br>Art.no. | Preisgruppe<br>Price bracket |
|--------------------------|---|---------------------|------------------------------|
| 73780                    | BLS RE 4/4  | =                   |                              |
| 73781                    |   | =                   | 🔊                            |
| 79781                    |   | ~                   | 🔊                            |
| 1                        | Hafrings.10Stk.12,9 bis 14,6mm<br>Set w. traction tyres 10 pcs. 12,9 - 14,6mm     | 40070               | ---                          |
| 2                        | Konussfeder<br>Cone spring  | 86202               | 3                            |
| 3                        | FK-Schraube M2x2,8/2,5 mm<br>Screw M2x2,8/2,5 mm                                  | 85704               | 4                            |
| 4                        | Zugfeder D=2,5 L=2,7/5,8 mm<br>Spring D=2,5 L=2,7/5,8 mm                          | 86208               | 3                            |
| 5                        | GF-Schraube M2x10 mm<br>Self-tapping screw M2x10 mm                               | 114854              | 3                            |
| 6                        | Zurüstbeutel<br>Bag of accessories  | 142423              | 15                           |
| 7                        | Lager f. Schneckenachse<br>Bearing for worm gear axle                             | 89749               | 6                            |
| 8                        | GF-Schraube M1,6x4 mm<br>Self-tapping screw M1,6x4 mm                             | 114850              | 3                            |
| 9                        | Standfuß lang<br>Stand long   | 142418              | 4                            |
| 10                       | Beilagescheibe 2,1x4/0,2mm<br>Washer  | 86108               | 3                            |
| 11                       | Kontaktfeder D=2,3 15,3 mm<br>Contact spring D=2,3 15,3 mm                        | 139833              | 5                            |
| 12                       | TS - Bremsschläuche + Zughaken<br>Part set - brake hose-pipe + coupling hook      | 139832              | 7                            |
| 13                       | Motor m. 2 Schwungm.+Kardanschale<br>Motor with flywheel,incl. cardan reception   | 142401              | 28                           |
| 14                       | Kardanschale kurz 1,5 mm<br>Cardan reception short 1,5 mm                         | 87129               | 4                            |
| 15                       | Kardanwelle<br>Cardan shaft   | 87214               | 5                            |
| 16                       | Schneckendeckel<br>Worm gear cover  | 108129              | 4                            |
| 17                       | TS - Blenden<br>part set - cover  | 142402              | 5                            |
| 18                       | Blendensteckteile<br>Cover plug-in parts  | 142403              | 7                            |
| 19                       | Radkontakt L=32,7 mm<br>Wheel contact L=32,7 mm                                   | 142404              | 7                            |
| 20                       | Getriebebesatz 3-teilig<br>Gear set 3-parts                                       | 115999              | 14                           |
| 21                       | Radsatz mit Zahnrad ohne Hafring<br>Wheelset with gear without traction tyre      | 134043              | 11                           |
| 22                       | Radsatz m.2Hafring. m.Zahnrad<br>Wheelset with 2 tr. tyres + gear                 | 134046              | 12                           |
| 23                       | Grundrahmen unterteil<br>Main frame lower part                                    | 142392              | 16                           |
| 24                       | Schneckenrad Z=17/19<br>Worm gear wheel   | 86413               | 5                            |
| 25                       | Zahnrad Z=18 gerade<br>Gear wheel Z=18 right                                      | 86460               | 3                            |
| 26                       | GF-Schraube M2x5 mm<br>Screw M2x5 mm  | 114966              | 3                            |
| 27                       | GF-Schraube M2x6 mm<br>Screw M2x6 mm  | 114828              | 3                            |
| 28                       | Standardkupplung<br>Standard coupling   | 89246               | 6                            |
| 29                       | Schneckenatz m. Kardankugel<br>Worm set with cardan                               | 86877               | 13                           |
| 30                       | Grundrahmen oberteil<br>Main frame upper part                                     | 142398              | 15                           |
| 31                       | Schneepflug<br>Snow plow  | 142395              | 6                            |
| <b>AC - Wechselstrom</b> |   |                     |                              |
| 32                       | Getriebeboden AC<br>Gear bottom AC  | 114487              | 8                            |
| 33                       | Radsatz m.2Hafr. m. Zahnr. AC<br>Wheelset w.2 traction tyres w.gear wheel AC      | 142427              | 12                           |
| 34                       | Hafrings.10Stk.12,5 bis 15,3mm<br>Set w.traction tyres 10pieces 12,5-15,3 mm      | 40075               | ---                          |
| 35                       | Radsatz o. Hafrtr. o. Zahnr. AC<br>Wheelset w/o traction tyre w/o gear wheel AC   | 142428              | 10                           |
| 36                       | GF-Schraube M1,6x4 mm<br>Self-tapping screw                                       | 114850              | 3                            |
| 37                       | Schleifer 42mm o. Halteklammer<br>Center pick-up 42mm                             | 86030               | 14                           |
| 38                       | Radsatz mit Zahnrad ohne Hafring AC<br>Wheelset w.gear wheel w/o traction tyre AC | 142429              | 11                           |